

Competition Brief

The challenge for the competitors is to design the entrance area to the Adršpach Rock City, including a new visitor and education centre.

Jury

Zdeněk Chmel
Zdenek Sendler
Eva Eichlerová
Eva Němcová
Štěpán Toman
Zdeněk Ent
Jakub Vajda
Tomáš Dimter
Pavína Nešporová
Zdeněk Zatloukal
Petr Fichtner
Jaroslav Tuček
Jakub Krebach
Lukáš Krebach
Jan Šprinc

Submission 1st phase
|27|06|2025|

Submission 2nd phase
|26|09|2025|



The Technical Services Adršpach (TSA), the operator of the Rock City, in collaboration with the Municipality of Adršpach, is launching an open, two-phase architectural and urban design competition for a new entrance to the Adršpach-Teplice Rocks. The aim of the competition is to find an outstanding design for a welcoming and well-crafted entrance area—one that reflects both architectural and urban design quality and enhances the unique natural character of this iconic landscape. The new entrance complex should be adaptable and flexible year-round. While the rock city is open in all seasons, the intensity of visitor traffic shifts dramatically. In winter, daily visitor numbers range between 100 and 300, totalling around 6,000 per month. In contrast, the summer season sees up to 4,000 visitors per day—nearly 90,000 each month.

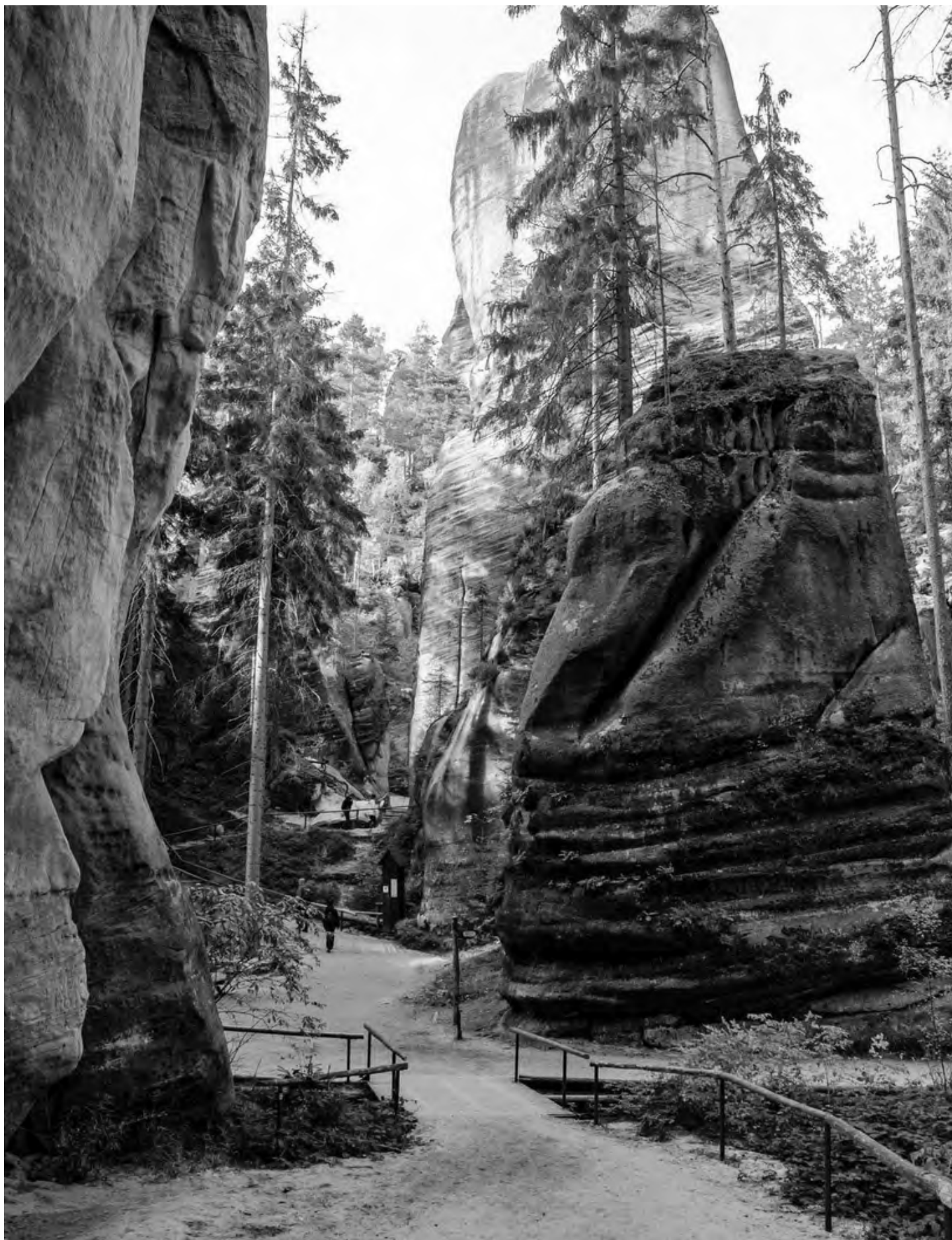


The Municipality of Adršpach

The Municipality of Adršpach is located in northeastern Bohemia, in the Náchod District of the Hradec Králové Region. With a population of around 500 permanent residents, the village offers basic public amenities, including a municipal office, visitor information centre, kindergarten and primary school (first level), restaurants, accommodation facilities, local associations, a climbing club, and a volunteer fire brigade—whose rescue unit is trained to respond to accidents in the rocks.

For secondary education and medical care, residents rely on nearby towns such as Teplice nad Metují or Trutnov. In the nearby settlement of Horní Adršpach stands the region's largest employer, the manufacturing plant Continental, which provides jobs for over a thousand people. However, this industrial presence also brings heavy truck traffic, adding pressure to the local infrastructure. The entire area of Adršpach lies within the Broumovsko Protected Landscape Area, a region renowned for its rich history, cultural heritage, and exceptional natural beauty. Broumovsko is famous for its sandstone rock formations, baroque landmarks, and picturesque villages.

Adršpach itself is best known for its unique sandstone rock city—an extraordinary natural attraction of national and international importance. Lesser-known but equally intriguing are the nearby Křížový vrch (Cross Hill), the ruins of Adršpach Castle, and Adršpach Chateau, home to the first Czech museum dedicated to mountaineering. Tourism is, quite naturally, the primary economic pillar of Adršpach. For a village



of just 500 inhabitants, the sheer number of visitors is both a great asset and a considerable challenge. While tourism is vital for the local economy—benefiting entrepreneurs as well as the municipality—it also places significant pressure on infrastructure and the surrounding landscape. The municipality is committed to sustainable tourism, aiming to strike a careful balance between the needs of tourism-related businesses, visitors, environmental protection, and long-term regional development. Five years ago, at the peak of exponential visitor growth, the situation had become unsustainable—transportation systems were overwhelmed. A key milestone in improving both the visitor experience and local quality of life came in spring 2021 with the introduction of an online reservation system. This measure helped significantly reduce pressure on the most visited areas by spreading visitor numbers more evenly throughout the day and week, minimizing traffic congestion and improving conditions around the rock city. It also enabled better control over visitor capacity.

Now, the municipality seeks to take another major step: through this architectural competition, it hopes to discover inspiring strategies for improving infrastructure and enhancing the quality of public services—especially those that serve visitors to the rock city. The ultimate goal is to shift Adršpach’s image from a great day-trip destination to a place where visitors are inspired to stay for a weekend or even a full holiday. This vision is already being supported through the Broumovsko Guest Card—a local initiative offering perks to overnight visitors. The card provides various discounts and benefits, including guaranteed access to the rock city without the need for prior reservation.

The Adršpach Rocks

The Adršpach Rocks National Nature Reserve forms part of the larger Adršpach-Teplice Rock Complex—the largest contiguous rock city in the Czech Republic. The Adršpach Rocks are among the country’s most visited natural attractions, especially during the high season from spring through autumn. Each year, several hundred thousand visitors—primarily from the Czech Republic, Poland, and Germany—flock to this spectacular landscape. According to the national tourism agency CzechTourism, the Adršpach Rocks were the most visited natural destination in the country in 2024, attracting 488,000 visitors and averaging up to 4,000 visitors per day.

A Reservation System for Sustainable Tourism

The Adršpach Rocks are now seen as a national example of how to effectively address the challenges of sustainable tourism—especially overtourism and infrastructure development in fragile natural environments. The site operator, TSA, in partnership with the Broumovsko Protected Landscape Area Authority, the Czech State Forests (Lesy ČR), and the municipality of Adršpach, has introduced an hourly visitor limit. This cap is designed to protect the delicate natural environment of the rock loop and to maintain smooth traffic flow and visitor satisfaction. Currently, no more than 400 people are allowed to enter the site per hour.

The online reservation system regulates both entrance to the rocks and vehicle parking. When purchasing tickets online, visitors are encouraged to book all-day parking in advance, linked to their license plate number. Those arriving during peak times without a reservation face a high risk of being denied entry and may also struggle to find parking. The village has only about 600–700 parking spaces available. Despite efforts of actively promoting the reservation system, many visitors—especially day-trippers from neighboring Poland, who make up around 70% of all visitors—still arrive unaware that a reservation is required.



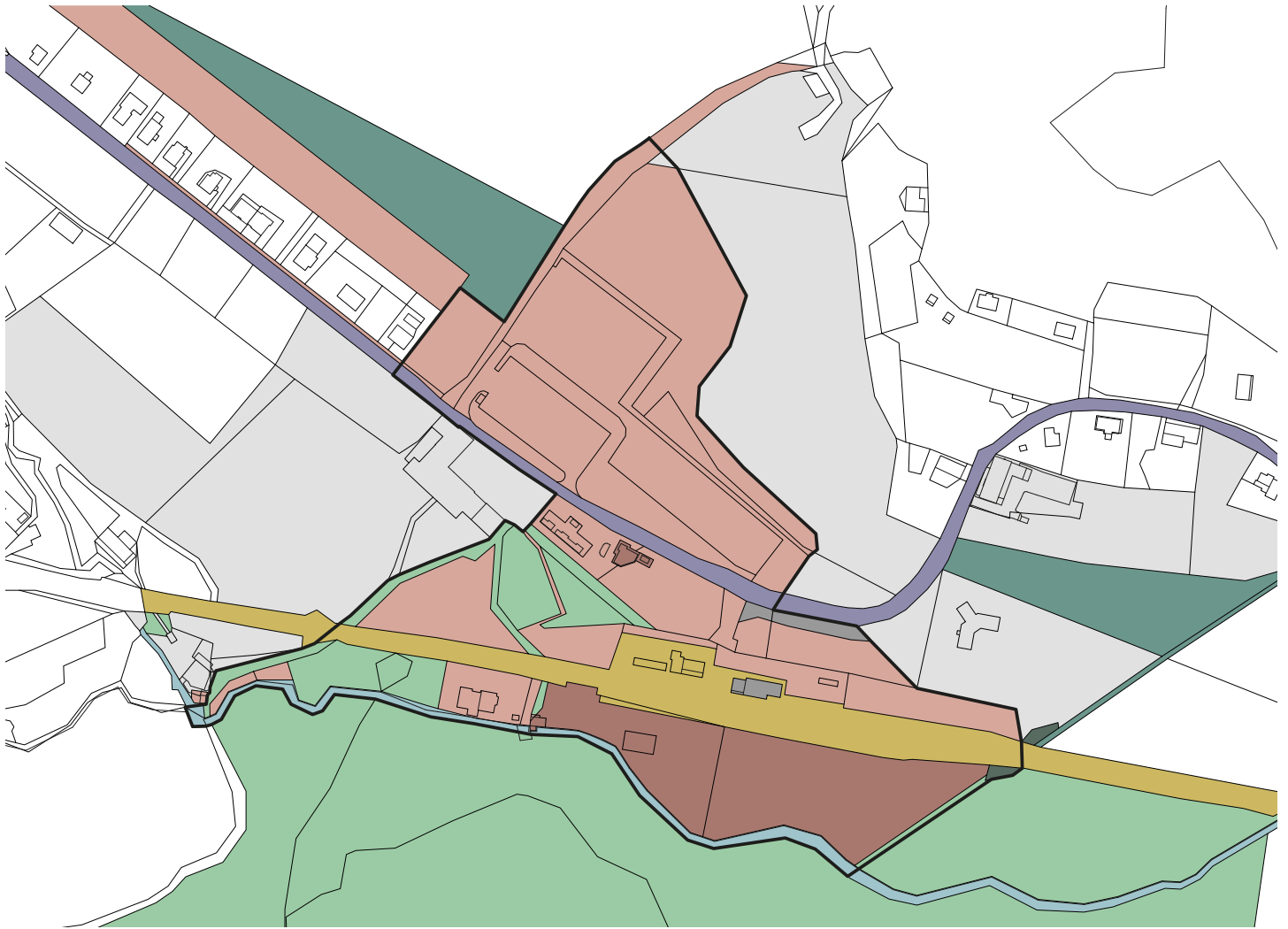
Competition area

The competition focuses on the area directly adjacent to the entrance of the Adršpach Rock City. This zone includes the main visitor car park, a regional class III road, the information center, the TSA administrative offices, ticket booths, souvenir and refreshment stalls, a railway line with the Adršpach train stop, public restrooms, and the Metuje River, which borders the rock city itself.

A key priority for the municipality is to resolve all visitor access, infrastructure, and operations within land owned by the municipality. One of the most problematic locations is the current refreshment area and pedestrian crossing over the road, where visitors pass through a privately owned plot (parcel no. st. 105). Competitors may also propose interventions on land currently owned by the Czech State Forests (Lesy ČR), which is in the final stages of being transferred to municipal ownership.

Land ownership

- municipality of Adršpach, Technické služby Adršpach s.r.o.
- currently owned by Lesy ČR but being transferred to the municipality
- Správa železnic (national railway company) – railway regulations and restrictions must be respected
- Hradec Králové Region – regional class III road
- Povodí Labe (Elb river basin management) – Metuje River
- privately owned plots within the area: st.154, 618/7, and 620/12



Private landowners within the Competition area

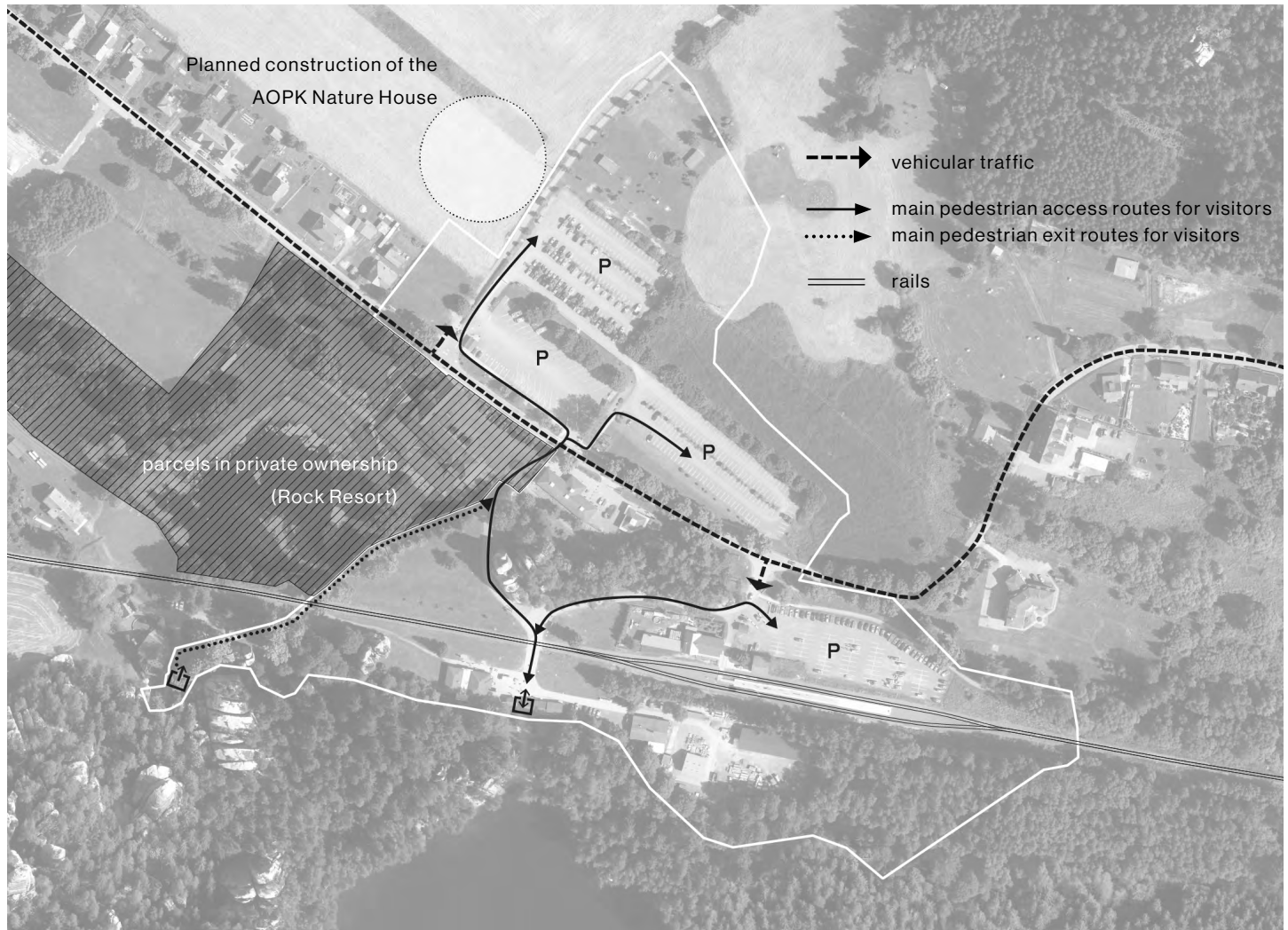
- David Malý, Bc., Boženy Němcové 1415, 50346 Třebechovice pod Orebem, parcel no. st.154 (a building near the railway, without a registration or descriptive number)
- František Křesťan, JUDr., Nad Zlíchovem 367/31, Hlubočepy, 15200 Prague, parcel numbers 618/7 and 620/12, located near the regional road

Private Landowners Affected by the Competition area

- Rock Resort s.r.o., Prosecká 37/40, 190 00 Prague, parcel no. st.105, building no. 119
- Miloš Vrzal, Dukelských hrdinů 969/6, 170 00 Prague 7, parcel numbers 1153/4, 522/5, and 1068/3
- Bernard Lainka, house no. 77, 38301 Pěčnov, parcel numbers 603/1 and 603/5
- CS Magic Resorts, a.s., Elišky Peškové 735/15, Smíchov, 15000 Prague 5, parcel numbers 620/11, 620/3, building no. 230

Parcels outside the Competition area

- plots owned by the Czech Nature Conservation Agency (AOPK), located along the northwestern edge of the competition zone – notably parcel no. 517/1, designated for the future construction of the “Nature House” (Dům přírody)



Mobility / Arrival / Access

Road Transport

The primary transport link to Adršpach is the Class III regional road connecting Trutnov and Teplice nad Metují. Starting in 2027, the opening of the D11 motorway to Trutnov-Poříčí, along with its connection to the Polish S3 expressway via the Královec border crossing, is expected to have a notable impact on Adršpach as a tourist destination. Currently, these regional roads are in poor technical condition. The majority of tourist-related traffic arrives via road II/301 from Teplice nad Metují. In addition to tourism, a significant volume of heavy vehicle traffic and commuter traffic is caused by employees traveling to the Continental manufacturing plant in Horní Adršpach.

Due to the high traffic load and the large number of visitors, it is absolutely critical to resolve the hazardous pedestrian crossing between the parking areas and the entrance to the rock city. The current pedestrian crossing poses multiple issues: it creates a dangerous conflict between pedestrians and vehicles (including buses) and leads directly onto privately owned land.

The goal is to find a solution for this key location that ensures pedestrian safety while allowing smooth access for visitors arriving by car or bus. The proposed

solution should provide clear and intuitive navigation for both drivers and pedestrians. Wherever possible, the solution should be implemented on municipally owned land (the municipality is currently negotiating the relocation or removal of a transformer station on plot 604/3). It is also essential to integrate the site with public bus transport, including providing clear information boards with updated timetables.

Parking

The parking areas are equipped with a camera-based license plate recognition system that is directly linked to the online reservation platform. In terms of capacity, the parking facilities align with the limits set by the reservation system, and expansion is not currently needed. Competitors should instead focus on optimizing the layout to clearly distinguish between short-term (drop-off) and long-term (all-day) parking, as well as designated areas for buses and electric vehicles. The design should also ensure a safe and logical separation between pedestrian and vehicle flows.

Parking capacity and facilities

- 600 parking spaces for cars – located at the “Railway Station Parking Area,” “Upper Parking Areas P1, P2, P3”
- 60 spaces for buses and caravans – located at “Upper Parking Area P1”
- 2 charging stations for electric vehicles
- Check-in area for vehicles – staffed service and self-service ticket machines
- Directional signage, maps, and guides, with a reduced presence of advertising boards (support for local businesses will be integrated within the information center)
- Public amenities – benches, waste bins, shelters

Railway Transport

In addition to road access, Adršpach is served by railway line no. 047, with regular train stops in both directions. Scheduled passenger services are operated by Czech Railways (ČD), alongside irregular services such as excursion trains on the Wrocław–Adršpach route. The municipality currently has no means of regulating the number of visitors arriving by train. One potential solution is to link train ticket purchases for travel to Adršpach with the existing online reservation system, supported by a high-quality, ongoing information campaign.

Train stop

Located near the entrance to the rock city is the “Dolní Adršpach” train stop. Classified only as a basic stop, it offers a minimal shelter on an outdoor platform. The Railway Administration (Správa železnic – SŽ) does not currently plan to develop further passenger facilities here. The municipality is negotiating with SŽ to lease the adjacent railway building, with the goal of converting it into a waiting area. Currently, the space is rented as a private residence, and SŽ has so far declined to terminate the existing lease or offer the space for municipal use.

Competition participants should consider how this building might be incorporated into the site plan if the lease ends in the future. However, the building should not be the main focus of the proposed program. The municipality continues to pursue either a purchase or long-term lease agreement.

Rail track area

The railway tracks run through a heavily trafficked zone used by visitors heading to the entrance of the rock city. This area poses safety concerns due to the potential

collision between pedestrians and passing trains. It is also used by TSA technical vehicles accessing the service yard. A new design solution should aim to at least partially separate pedestrian flows from the movement of TSA vehicles.

The municipality, in collaboration with the Hradec Králové Region (the local public transport authority), is committed to encouraging more tourists to use public trains and buses. To support this effort, the region typically increases the frequency of both rail and bus services to the Broumovsko area during the summer season.

Recreational activities / Sustainable Mobility

The municipality is traversed by Cycle Route 22 – the Sudeten Route – as well as several long-distance hiking trails, including the northern route of Via Czechia, Stezka Českem, and Hřebenovka. The local educational trail “NS Křížový vrch – Adršpach” begins at the parking area. This trail follows the historic Way of the Cross from the 17th century, leading to Křížový vrch near Dolní Adršpach. The area features a small rock city with two sandstone tower bands and the cliff wall “Štít,” which is a popular climbing site.

Visitor Circuit of Adršpach Rocks

The Adršpach Rock City features a single paid visitor circuit, which the municipality of Adršpach leases from Lesy ČR (Forests of the Czech Republic). The circuit is operated on behalf of the municipality by the company TSA. The trail is open year-round; however, accessibility of the viewpoints can be affected by snow conditions in winter. A shorter route known as the “Old Section” to the Great Waterfall is maintained even during winter, making it accessible all year. The paid circuit follows the green tourist trail, is 3.5 km long, and takes about two hours to complete. The visit can be enhanced with a boat ride on the lake (available from April to October) or extended by connecting to other trails. While the trail is not particularly difficult, some parts—outside the old section—require ascending narrow stairs, making it non-barrier-free and unsuitable for strollers or wheelchairs. Visitors must return along the same route. Adršpach Rocks are connected to Teplice Rocks by the Wolf Gorge (Vlčí rokle), a 4 km trail. Both rock cities have nearby train stops, making it easy to return from Teplice Rocks to Adršpach by train. The journey takes approximately 10 minutes and trains run at roughly hourly intervals.

Entrance to the Rock Circuit

The entrance to the circuit is located at a footbridge over the Metuje River near the lake, combined with the ticket booth facilities. These ticket booths are currently used minimally, as most visitors purchase entry via the online reservation system and access the trail through turnstiles located near the booths.

Exits from the Rock Circuit

Visitors can exit the rock circuit at three locations

- Lake Exit – identical with the main entrance.
- “U Hotelu Zátiší” Exit – located at the site of the original entrance, now functioning only as an exit through a one-way turnstile.
- “Na Ozvěně” Exit – located outside the competition area, in the direction of Havraní město (Raven City)

Entrance to the Rock City

The current entrance environment to the Adršpach Rocks is inadequate and unrepresentative. The first impression for visitors consists of expansive parking lots for cars and buses, several low-quality fast-food stalls, and a small tourist information

centre with public toilets. Aside from two gazebos near the parking areas, there are no calm relaxation zones or play elements for children.

Visitor Facilities

At present, four buildings serve the needs of visitors:

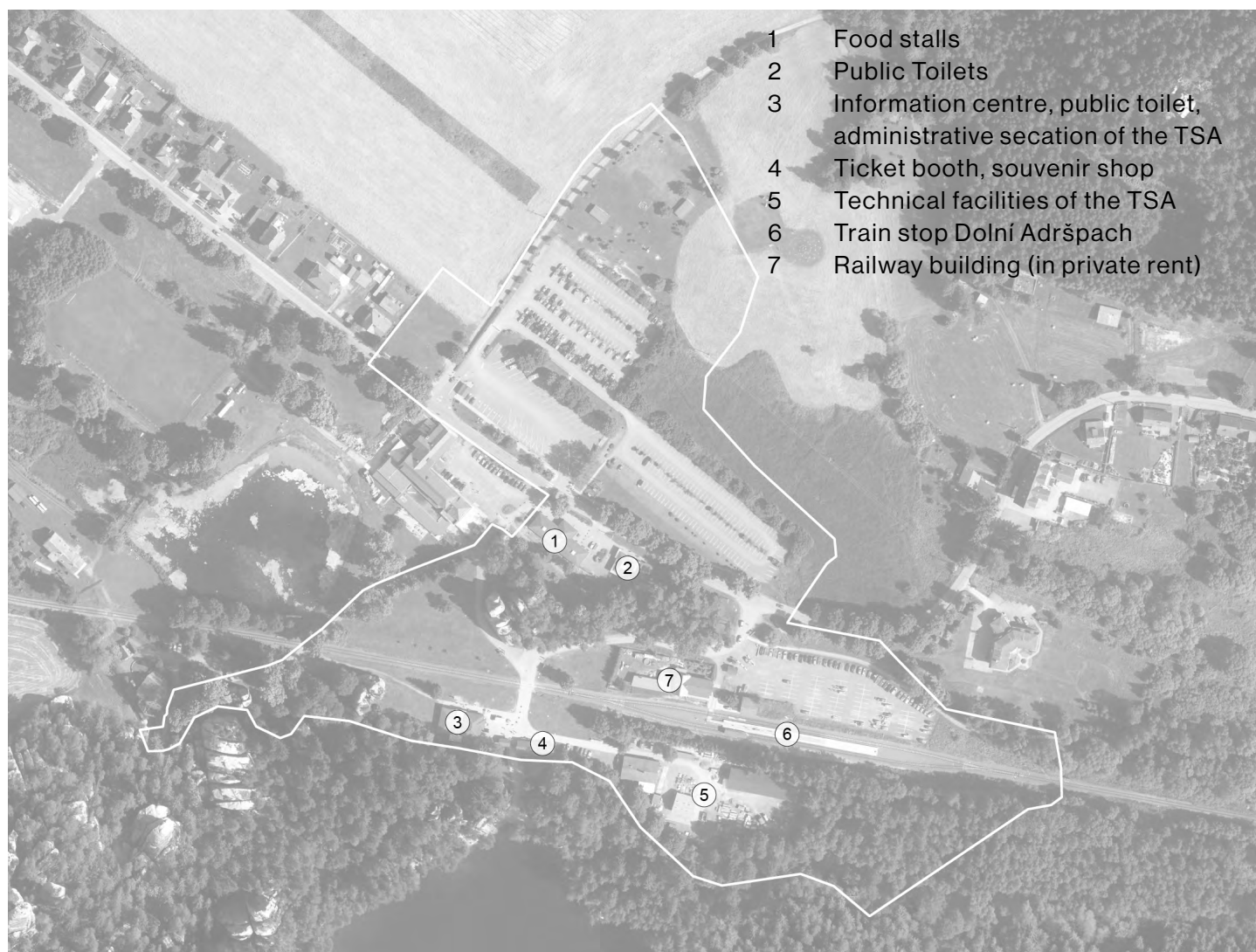
Information Centre – This building is shared with the administrative offices of TSA, located close to the entrance of the rock city. The administrative section is in an older structure, which no longer meets the functional or technical needs of the TSA. Attached to it is a newer annex from 2012 that houses public toilets and the tourist information centre.

The information centre is insufficient in terms of size, capacity (only two service counters), and services provided, especially considering Adršpach is among the most visited natural destinations in the Czech Republic.

There is also a lack of any interpretive or educational exhibition about the Adršpach–Teplice Rocks, their geology, appropriate visitor behaviour, and the daily care and maintenance of the area.

Ticket Booth / Souvenir Shop – Marks the actual entrance to the rock city and provides physical ticket checks. It reflects an older arrangement when ticket sales and entrance control occurred together, including the sale of souvenirs.

Food Stalls – Currently, these mostly resemble low-end station buffets. The selection is very limited, focusing on fast food like fries, pizza, and kebab. There is no trace



of local Czech cuisine or thematic alignment with the rock city. The food stalls also lack their own restrooms.

Public Toilets – There are two public restroom facilities for visitors. One is located in a standalone building near the food area and parking. The second is integrated into the info centre near the rock city entrance.

Overall, the capacity and quality of the facilities do not meet current service standards or match the level of tourism intensity.

The competition seeks the best solution for creating a cultivated, architecturally and urbanistically high-quality entrance area to the Adršpach Rocks. The area should serve both operational and recreational needs of nearly 490,000 annual visitors.

The new entrance area must be variable and flexible throughout the year. While the rock city is open all year, visitor intensity varies greatly. In winter, daily visitation ranges from 100–300 people (approx. 6,000 per month), while in summer it spikes to 4,000 people daily (approx. 90,000 per month).

Key requirements include smooth traffic and parking management, clear and understandable wayfinding, and safe pedestrian corridors.

The entrance area must also be designed for comfortable, longer stays, both before and after visiting the rock city. It should offer a wide range of accompanying activities to encourage visitors to linger and thus help distribute visitation more evenly over time and reduce overcrowding at peak hours. These activities should cater to all age groups.

At the northwestern edge of the project area, on a parcel owned by the Czech Nature Conservation Agency (AOPK), there is a planned future development of the House of Nature of Broumovsko. This centre will present and interpret the entire Broumovsko Protected Landscape Area (CHKO).

New visitor facilities

The entrance area to the Adršpach Rocks should provide ample space for informing and educating visitors, offering high-quality and cultured gastronomy, entertainment for both children and adults, as well as opportunities for passive recreation and relaxation.

Information Centre

The new information centre should be large enough and have a sufficient number of customer service counters or interactive kiosks to prevent queues, even during peak hours. Staff should be able to calmly provide visitors with all the necessary information about the rock city and especially advise them on how to spend their time at the entrance area in case the rock circuit is temporarily at full capacity and the entrance is closed, or if they need to wait for their train departure.

- Capacity: up to 4,000 visitors per day, 2–4 staff members.
- Visitor services: complete information about the area, tickets, hiking routes, and rules of movement; distribution of promotional materials; ticket sales without reservation; group and travel agency processing.
- Automated systems / self-service: online ticket reservations, light refreshments (coffee, water).
- Interactive information kiosks and displays: suggested routes by difficulty

level, local attractions.

- Indoor rest area (heated and accessible in bad weather without purchase requirements).

Adršpach-Teplice Rocks Educational Centre

This should be part of the new information centre and offer a multimedia, interactive and experience-based exhibition about the rocks, their formation, history, geology, wildlife, flora, and the care for their protected values. In addition to a permanent exhibition, the space should allow for temporary exhibitions and themed workshops. The content should be suitable for children, school-age youth, and adults.

- Permanent exhibition.
- Temporary exhibitions or educational events – conference space for approx. 40–50 people (for professionals, educational school programs).

Souvenir / Local Product Shop

Space for small-scale retail, self-service and/or staffed.

- Souvenirs of elevated quality
- Local artisanal and farm products related to the Broumov region .

Rock City Entrance / Entry Facility / Turnstiles

Access control through turnstiles combined with physical staff oversight.

Refreshments

The catering offer should consist of well-presented food services – a restaurant with regional and high-quality cuisine (partially self-service), a café and patisserie offering high-quality desserts and ice cream.

- Capacity: up to 4,000 visitors per day, 2–4 staff members.
- Variability and year-round operation: the possibility to scale services depending on the season. In winter, there are around 100–300 visitors daily (approx. 6,000 per month); in summer, up to 4,000 per day (approx. 90,000 per month).
- Family-friendly amenities – changing tables, children's corner.

Public toilets

Visitors must have access to a sufficient number of freely accessible toilets. The number of toilets should be high enough to prevent long queues, even during peak hours and days. Toilet use should be free of charge, as charging a fee could discourage visitors from using them. Providing dignified and easily accessible sanitary facilities at the entrance to the rock city is the only way to eliminate pollution of the natural environment around the trail circuit, where no sanitary facilities are available.

- Toilet capacity: 400 visitors/hour; overall daily visitor number approx. 4,000;
- Placement: Toilets should be located according to the concentration of visitors, taking into account the new layout of buildings, parking, and refreshment areas;
- Accessibility: Part of the toilets must be available outside the official opening hours of the rock city area – accessible 24/7.

Facilities for Cyclists and Pedestrians

As part of the redesign of the entrance area to the rock city, the infrastructure for both cyclists and pedestrians should be improved – particularly by placing bike storage more appropriately and offering charging stations for e-bikes. Bike rental is not desirable.

- Luggage lockers: approx. 30–40 lockers;
- Bike storage: 30 bike stands – secure, weather-protected, and resistant to theft and vandalism; the current bike storage is inappropriately located next to the ticket offices across the railway crossing;
- E-bike charging stations: approx. 5–6 charging spots..

Public Space for Visitors

Rest Areas / Seating / Park-like Relaxation Zone

The goal is to create a space that reinforces the unique identity of the location while harmonizing with the surrounding nature and character of the Adršpach Rocks..

- Rest areas – options for quiet seating outdoors, both in the shade and under shelter from the elements – seating furniture and shelters against sun and rain;
- Shelter in case of bad weather (cold/rain) – indoor capacity without requiring the purchase of refreshments; heated spaces;
- Park-style landscaped relaxation zone with mature trees;
- Additional infrastructure – trash bins, recycling options, drinking fountains, informational boards;
- Designated area for dogs – drinking fountain, leash stations, waste bag dispensers (dogs are allowed in the area and make up approx. 6% of all visitors);
- All furnishings must be resistant to high visitor numbers and harsh weather conditions.

Play and Recreational Activities

- Play elements, climbing frames and swings in a natural style, made from wood, stone, and other natural materials;
- Water feature – a simple fountain or a natural-looking channel with circulating water.

The overall design of the entrance area to the rock city – from the first point of contact (parking, train station, bus, bicycle stands) through the entrance to the rocks, the rock city experience itself, and the return – should provide visitors with a complete and coherent experience.

Facilities for the Operation and Management of the Adršpach Rocks

The current administrative facilities of the TSA company are located in an older building adjacent to the information center extension, in close proximity to the entrance to the rock city. This older structure no longer meets the current operational and spatial requirements of TSA. The competition proposal should include facilities that reflect the present-day needs of the organization.

TSA Staff

- 10 permanent administrative employees;
- 10 permanent workshop employees;
- Approximately 40 seasonal employees (ticket clerks, nature wardens, boat operators, information centre assistants, cleaners; 12 employees per shift for the operation of the info centre, ticketing, and animators; approx. 4 staff for parking management)..

Employee Facilities

- Offices for TSA administrative staff – practically arranged to match the

- functional needs of individual roles;
- Meeting room for 12 people;
 - Room for a small archive, office supplies, and server room;
 - Kitchens with a common room / dining area;
 - Sanitary facilities, including showers – approx. 16 employees per shift; staff change into company uniforms and store personal clothing and shoes; technical workshop staff have separate facilities and changing rooms located in a service yard outside the entrance area;
 - Storage areas – proposals must include storage space for consumables near public toilets, marketing material storage, a storage area for work clothing near the changing rooms, and a storage room for promotional and souvenir products at the info centre;
 - Rescue service support – a small support facility and storage space for rescue equipment at the entrance to the rock city..

The newly organized visitor area should also improve the everyday working conditions for TSA staff and minimize operational conflicts between visitors and employees – especially regarding the movement of service vehicles and their crossing over the railway.

All new buildings, as well as the design of public spaces, should respond to the context of traditional local rural architecture while achieving high architectural quality. The use of natural materials (such as stone and wood) is recommended, as a reference to the natural values of the surrounding rock landscape.



Současné informační centrum, pokladna a vstup do skal

Jury / Dependent part

Jakub Vajda – jury vice-chair
mayor of Adršpach

Tomáš Dimter
vice-mayor of Adršpach

Pavína Nešporová
representative of Adršpach

Zdeněk Zatloukal – alternate
representative of Adršpach

Petr Fichtner – alternate
representative of Adršpach

Jaroslav Tuček – alternate
representative of Adršpach

Jakub Krecbach – alternate
representative of Adršpach

Lukáš Krecbach – alternate
representative of Adršpach

Jan Šprinc – alternate
representative of Adršpach

Jury / Independent part



Zdeněk Chmel

He studied architecture at the Faculty of Architecture in Brno and at the Berner Fachhochschule in Switzerland. After internships at Herzog & de Meuron, Office Haratori in Zurich, and Christian Kerez in Berlin, he co-founded the Malý Chmel studio in 2016. Their first project, a school extension in Nezamyslice, received several awards. The studio has since won multiple competitions, including for the 4 Dvory housing project, the House of Art in České Budějovice, and Nové Mlýny in Kutná Hora as the Nové Mlýny complex in Kutná Hora.



Zdenek Sendler

He graduated from the Faculty of Horticulture in Lednice, specializing in garden and landscape design. Since 1990, he has led a landscape architecture studio in Brno. He is active in teaching and publishing, and serves on the scientific boards of the FA CTU, Mendel University's Faculty of Horticulture, and is also a member of the Czech Beekeepers Association.



Eva Eichlerová – jury chair

She graduated from the Faculty of Architecture at Brno University of Technology. In 2010, she co-founded the EA Architekti studio with her husband Zdeněk Eichler. Her work spans public buildings, family houses, urbanism, and spatial planning. She has contributed to projects such as the Ostopovice elementary school, Blansko terminal, park revitalizations in Boskovice and Hodonín, and the urban study of Nová Zbrojovka.



Eva Němcová

She studied Landscape and Open Space Planning and Design at Leibniz University Hannover. She specializes in the landscape water component and has experience in arid regions extremely impacted by climate change. She has trained, carried out research, and taught in Germany, Peru, South Africa and the USA, and is now based in the Czech Republic.



Štěpán Toman – alternate

After graduating from the Academy of Arts, Architecture and Design in Prague, he spent several years working at KPF in London. Upon returning to Prague, he joined AID studio, where he contributed to the design of the Philharmonic and Congress Center in Zlín and led the project for the new Faculty of Humanities at Zlín University. In 2011, he founded his own architecture office, Ting. His favorite project is an unawarded competition proposal for the revitalization of the Podmokly district



Zdeněk Ent – alternate

He studied at the Faculty of Architecture, Czech Technical University in Prague, and worked briefly in the Netherlands and France. In the Czech Republic, he has completed several projects, such as the renovation of the Malá scéna club and the covered swimming pool in Ústí nad Orlicí. His interest in the "invisible architecture of relationships" led him to IPR Prague, where he leads the Soutok project and focuses on involving communities in the cultivation of suburban landscapes.