

# SPORTS HALL IN ŽATEC

## CONTENTS

JURY	4
COMPETITION AREA	5
PARAMETERS - SPECIFICATIONS	6
ZONING PLAN	7

THE MUNICIPALITY OF ŽATEC ANNOUNCES AN ARCHITECTURAL COMPETITION FOR A NEW SPORTS HALL WHICH WILL BE USED PRIMARILY FOR BALL GAMES. THE AIM OF THE COMPETITION IS TO SELECT THE MOST SUITABLE ARCHITECTURAL SOLUTION THAT HAS BEEN DESIGNED WITH REGARD TO THE OVERALL ECONOMY OF THE BUILDING.

THE NEW SPORTS HALL MUST ALLOW FOR COMPETITIVE MATCHES AND TRAINING. IT MUST BE ACCESSIBLE DURING SCHOOL AND EVENING HOURS FOR MEMBERS OF THE PUBLIC AND LOCAL SPORTS CLUBS.

## JURY

### JAKUB NAŠINEC

Jakub Našinec graduated from the Faculty of Architecture at the Czech Technical University in 2001. During his studies and a few years after graduation, he worked as an intern at the Erick van Egeraat AA studio and in the office of Roman Koucký. In 2004, he and his colleagues founded the architectural studio Sporadical, where he participated, among other things, in the design of the award-winning sports hall in Dolní Břežany, the completion of the gymnasium of the J. Kepler Grammar School or the award-winning competition designs of the Horácká Arena in Jihlava and the gym in Červený Kostelec. Since 2021 he has been running his own studio.



[www.nasinec.space](http://www.nasinec.space)

### JÁN STUDENÝ

Ján Studený graduated from the Faculty of Architecture at the Czech Technical University and then from the Academy of Fine Arts in Prague. In 1996 he co-founded the KSA studio, which he has been running since 2009 after the tragic death of David Kopecký. Among other projects, in recent years the studio has been working on the transformation of the Dukla Sports Complex in Pardubice. This project attained first place in a competition for a sports hall in Nová Paka. The studio also attained second prize in a competition for the redevelopment and reconstruction of a sports complex in Chrudim.



[ksastudeny.sk](http://ksastudeny.sk)

### GABRIELA KAPRÁLOVÁ

Gabriela Kaprálová completed her studies in architecture at the Academy of Fine Arts and Design in Bratislava in 1994. Before establishing her own practice, she worked in Genia Loci and Omicron-K studios. Since 2006, she has been running her own studio ASGK, which is known for the reconstruction of the Rytířská Palace (Grand Prix of Architects 2009). The studio designed the winning entry for the Šatovka Senior Center in the architectural competition hosted by the Praha 6 municipality. They also designed the Leisure Club in Roudnice nad Labem.



[asgk.cz](http://asgk.cz)

### JAKUB VAŠEK (alternate)

Jakub Vašek graduated in architecture at the Faculty of Civil Engineering at the Czech Technical University. Since 2016, he has been working in the architectural studio monom architects, where he has participated in the award-winning designing of the sports complex in the competition „Krnov na Start“ at the Prague-Veleslavin train station. He has also won competitions for the design of Komenský Park in Kolín and the library in Česká Lípa.



[jakubvasek.cz](http://jakubvasek.cz)

### JAN SKOČEK (náhradník)

Jan studied architecture in the studio of Ivan Kroupa and Jana Moravcová at the Academy of Arts, Architecture and Design in Prague, which he completed with his award-winning project „Between the City and Stadiums“. Immediately after his studies, he started a one-year internship at the Swiss studio Christ & Gantenbein, where he participated in the design of the Lindt Gallery and Administration Centre. Currently, he is engaged in his own practice and work in the architectural studio Ječmen.



[janskocek.com](http://janskocek.com)

### RADIM LAIBL

Deputy Mayor of Žatec and Councillor for Health of the Ústí nad Labem Region



### JÍŘÍ KARAS

Councillor, Chairman of the Commission for Physical Education and Sport (Union for Sport and Health)



### BŘETISLAV SEDLÁČEK (alternate)

Designer



### VÁCLAV RUSŇÁK (alternate)

Department of City Development, Investments



## COMPETITION AREA

THE SPORTS HALL WILL BE LOCATED ON THE SOUTHERN EDGE OF THE TOWN ON PLOTS 4646/22, 4646/26, 4646/27, 4646/21, 4646/6, WHICH ARE OWNED BY THE MUNICIPALITY OF ŽATEC.

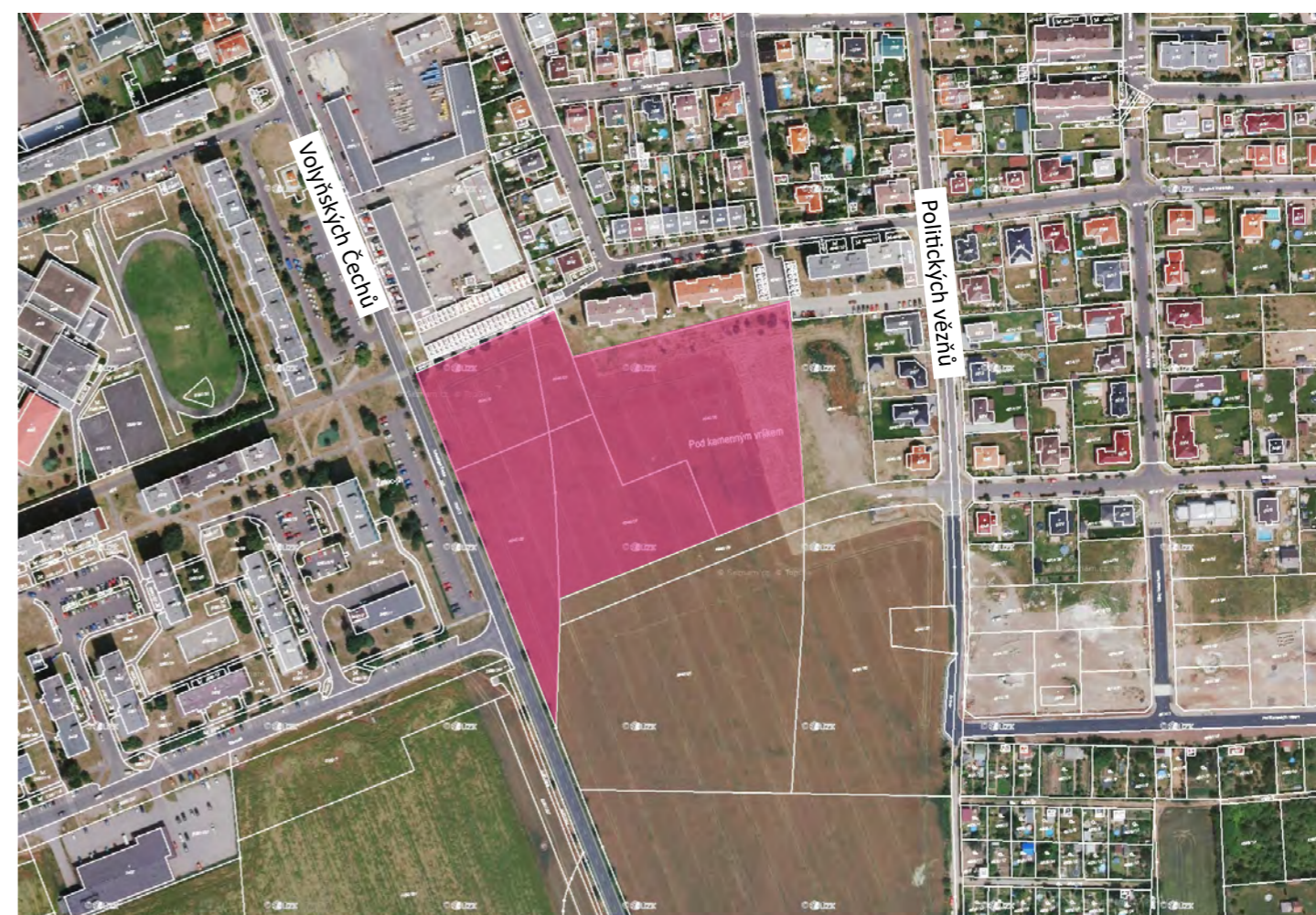
A wholesale lumber store adjoins the plot on the north side and a residential zone extends on the east side.

The land on the south side of the planned sports hall remains vacant and in the future will serve as a sports and recreation area (sports development area).

### TRANSPORTATION CONNECTION / SOLUTION

The entrance to the spectator parking lot can be considered from Volyňských Čechů Street or from the planned connecting road between Volyňských Čechů Street (roundabout) and Politických vězňů Street.

However, the traffic connection and the overall traffic solution is left to the discretion of the competitors.



## PARAMETERS - SPECIFICATION

THE HALL WILL BE USED FOR SPORTS MATCHES AND TRAINING. (SPORTS: **FOOTBALL, BASKETBALL, FLOORBALL, FUTSAL, VOLLEYBALL, HANDBALL, NATIONAL HANDBALL**)

THE TOTAL CONSTRUCTION COSTS FOR THE ACTUAL CONSTRUCTION OF THE HALL AND PARKING AREAS ARE TENTATIVELY SET AT 200 MILLION CZK (EXCLUDING THE OUTDOOR FIELD).

PLAYING AREA 46 x 30 m with the possibility of dividing it into two playgrounds

The preferred surface for the playing area is a material corresponding to category P2 according to ČSN EN 12904; the recommendation is that the design should allow the boundary lines of the individual pitches to be made of LED lights.

CLEAR HEIGHT: 12,5 m above the central court

NUMBER OF PLAYER ROOMS: 8 + 2 (for approx. 20 persons)

NUMBER OF ROOMS FOR REFEREES: 2 (3+3 referees)

CLOTHING ROOM EQUIPMENT: lockers, separate sanitary facilities. We recommend that 2 changing rooms for players be designed for people with reduced mobility

ACCESS FROM THE OUTDOOR PLAYING FIELD through the so-called "changing filter" or 2 changing rooms will be reserved for outdoor use only

TRIBUNES for a minimum of 600 spectators (900 spectators is the upper limit) in individual seating

THE HALL: including changing rooms and sanitary facilities- should be as wheelchair accessible as possible.

ANNOUNCER / SOUND / DIRECTION in the form of a built-in auditorium

LIGHTING BOARD / SCREEN: possibility of placing a 10 x 4 m screen for spectators + smaller board for players on the bench

ROOM FOR EXERCISE: 60 m<sup>2</sup>- possibility to be included in the common areas

STORAGE OF SPORTS TOOLS in connection with the access to the playing field minimum size is 70 m<sup>2</sup>

INFIRMARY with its own sanitary facilities- can be shared with the coaches' locker room (6 persons)

SOCIAL ROOM: 20- 30 people (meeting room, press conferences, mix zone)

REFRESHMENTS IN THE SPECTATOR ZONE: possibility of basic refreshments in the paid zone during sports and cultural events + necessary facilities (simple gastroprovision for imported refreshments)

ENTRANCE HALL WITH VESTIBULE

THE RECEPTION will be located in the lobby at the main entrance. It will include minimal sanitary facilities (only a basic emergency toilet) and a small warehouse. A basic range of hot beverages will be provided by the reception staff in the form of a lobby during dedicated opening hours.

VENDING MACHINES will provide a complementary range of refreshments

TECHNICAL BACKGROUND: heating exchanger, DHW, TS, workshop with warehouse

ACCOMMODATION: shared or separate entrance

Double room 2x

Quadruple room 4x with possibility of bunk beds

Toilets, bathrooms hygiene space near the rooms

Club room / Dining room 20- 30 persons + dispensing of kitchen delivered meals

Cleaning room, laundry and drying room, laundry storage

OUTDOOR AREA

OUTDOOR TRAINING GROUND for volleyball and handball with artificial surface, area 46 x 26 m (for national handball), with stands for 30- 40 people, illuminated, 2 changing rooms for outdoor operation will be located in the main building, outdoor climbing wall

PARKING: Availability for 150 cars, vehicles for disabled users, 3 buses and 1 transmission TV car

LAND OCCUPANCY: according to the zoning plan 4000 m<sup>2</sup>, parking areas up can take up to 30%

THE REMAINING AREAS ARE TO BE RESOLVED BY PARK LANDSCAPING, GREENERY

RAINWATER INFILTRATION THROUGH AN INFILTRATION FURROW

ENERGETICS

The design of the sports hall assumes an energy-efficient standard (low heating demand, use of renewable energy resources). The participants shall therefore briefly describe the structural design of the building, the technical systems for the indoor environment (heating, hot water, ventilation and cooling) and the energy sources in their proposal. At the same time, the design must respect the requirement for low operating costs (energy and connection costs, maintenance and servicing of equipment), automatic operation and the achievement of appropriate indoor comfort in the building.

The building will be connected to the heating system.

## ZONING PLAN

BK 2

Permissible land use, activities and buildings:

- housing in apartment buildings
- educational, medical, social and religious facilities
- administration (public administration, finance, post office, office buildings, etc.)
- sports buildings and facilities to serve the zone (e.g. volleyball courts, playgrounds)
- parking and parking spaces
- local, dedicated and pedestrian roads
- technical infrastructure networks and facilities
- greenery (public, protective, other, etc.), gardens

Conditionally permissible land use, activities and buildings :

The condition is that:

- it must not interfere with the main activity
- the production of noise, dust and odour, including traffic, does not exceed the hygiene standards set for residential zones:
- objects of the integrated rescue system (fire brigade, police)
- cultural facilities, excluding entertainment facilities (such as discos)
- buildings for public catering and temporary accommodation
- buildings for retail trade
- business activities (services, shops)
- indoor and terraced garages

Unacceptable land uses, activities and structures:

- housing in family houses
- buildings for wholesale and supermarkets
- individual recreational use (cottages, holiday homes)
- mass recreation
- warehouses and storage areas
- industrial production
- agricultural production
- garden settlements
- horticulture

**Zoning rules:**

**Max. building area: 40 % for new construction**

**Min. green area: 40 %**

**Max. building level: for the design areas** of the southern part of BK1, **southern part of BK2** and the BK3 area, **a maximum of 4 floors** are allowed, for the areas of the northern part of BK1 **and the northern part of BK2 a maximum of 6 NP is allowed.**

<https://www.mesto-zatec.cz/radnice/odbory-uradu/stavebni-a-vyvlastnovaci-urad-zivotni-prostredi/urad-uzemniho-planovani/zatec/uzemni-plan-zatec-485cs.html>

